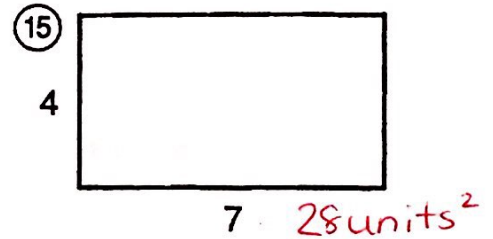
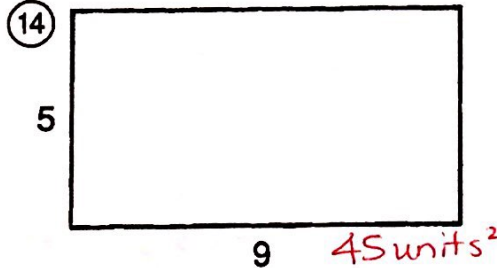
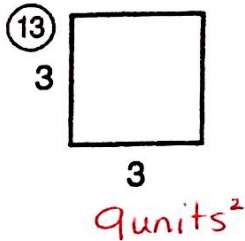
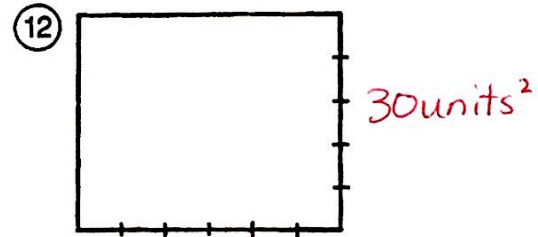
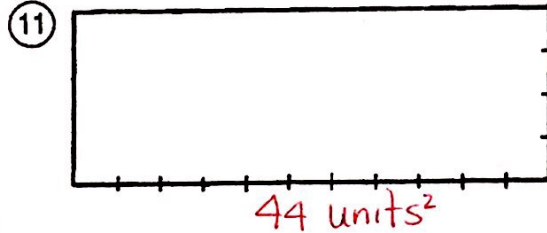
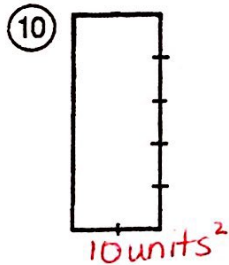
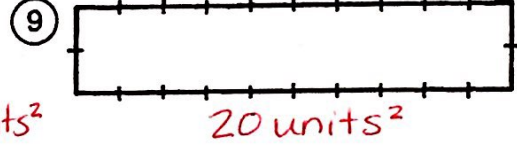
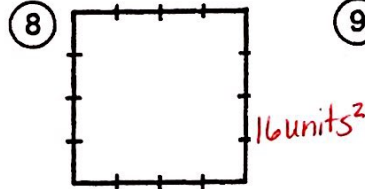
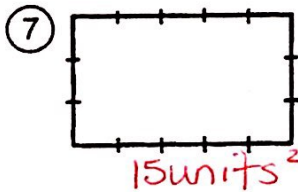
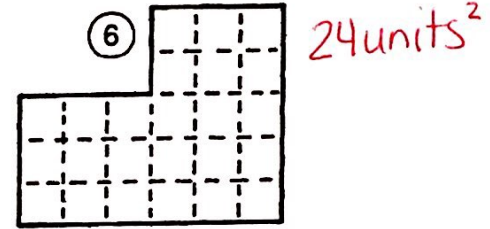
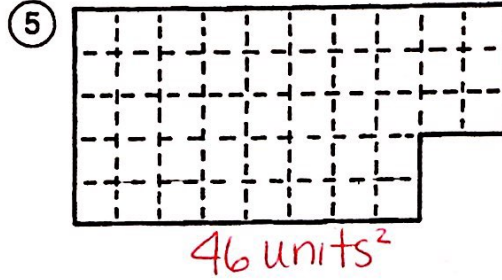
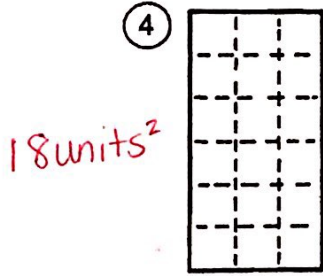
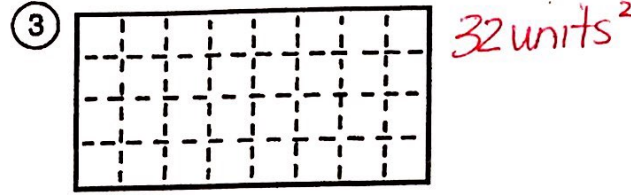
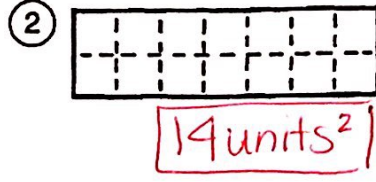
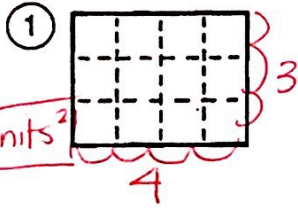


What Does a Tuba Call Its Father?

Give the number of square units in each figure. Find your answer and cross out the letters above it. When you finish, the answer to the title question will remain.

$A = bh$
 $A = 3 \cdot 4$
 $A = 12 \text{ units}^2$



TH	TU	GR	OO	BA	MI	BO	OM	MY	US	PA	IR	ST	OP	UB	PA	LS	AD	AD
32	15	9	42	20	12	28	21	44	18	8	45	24	14	16	27	30	46	10

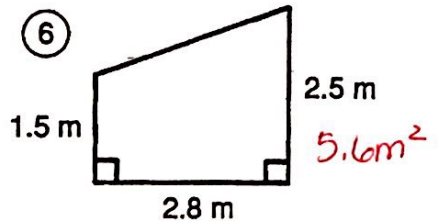
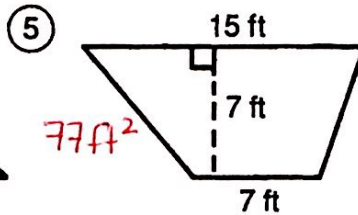
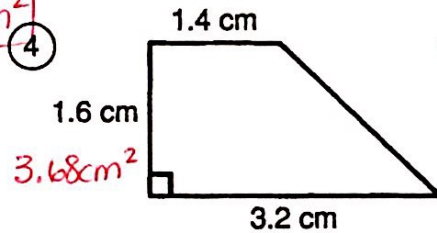
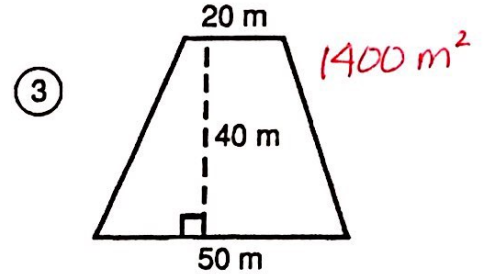
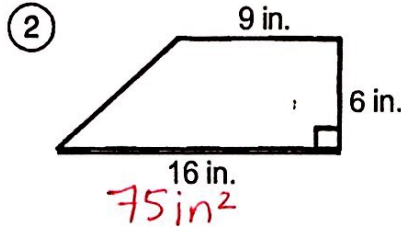
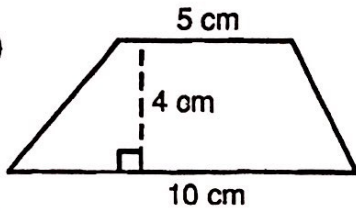
What Game Did Tarzan Like to Play?

EXTRA CREDIT

Do each exercise below. Find your answer in the answer columns and notice the letter next to it. Look for this letter in the string of letters near the bottom of the page and CROSS IT OUT each time it appears. When you finish, write the remaining letters in the rectangle at the bottom of the page.

I. Find the area of each trapezoid.

$A = h \left(\frac{b_1 + b_2}{2} \right)$
 $A = 4 \left(\frac{10 + 5}{2} \right)$
 $A = 4(7.5)$
 $A = 30 \text{ cm}^2$



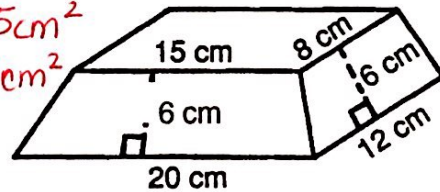
7) $b_1 = 11 \text{ in.}$
 $b_2 = 9 \text{ in.}$
 $h = 8 \text{ in.}$
 Handwritten area: 80 in^2

8) $b_1 = 3.4 \text{ m}$
 $b_2 = 6.4 \text{ m}$
 $h = 5.0 \text{ m}$
 Handwritten area: 24.5 m^2

9) $b_1 = 70 \text{ cm}$
 $b_2 = 30 \text{ cm}$
 $h = 25 \text{ cm}$
 Handwritten area: 1250 cm^2

II. An artist designed a base for one of his sculptures with the dimensions shown. The top and bottom are rectangles. The sides are isosceles trapezoids.

- 10) Find the area of the front face (20 cm base). Handwritten area: 105 cm^2
 11) Find the area of the side face (12 cm base). Handwritten area: 60 cm^2
 12) Find the area of the top. Handwritten area: 120 cm^2



(Y) 76 in. ²	(N) 105 cm ²	(O) 80 in. ²	(D) 3.68 cm ²	(S) 3.92 cm ²
(L) 24.5 m ²	(B) 30 cm ²	(T) 120 cm ²	(Z) 1,360 cm ²	(F) 5.6 m ²
(A) 72 cm ²	(R) 69 ft ²	(P) 26.2 m ²	(M) 75 in. ²	(I) 60 cm ²
(U) 1,400 m ²	(C) 95 cm ²	(G) 77 ft ²	(H) 1,250 cm ²	(E) 4.5 m ²

D T B C H O R I N F A M T U O Z D N Y F A L T B P I E G U N S H

Answer to puzzle: