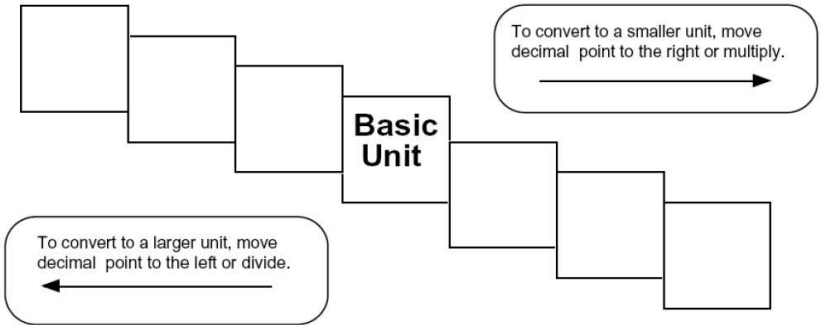


Customary Practice




<p style="text-align: center;">Length</p> <p>1) 1 yard = 3 feet</p> <p>2) 1 foot = 12 inches</p> <p>3) 1 mile = 5,280 feet</p> <p style="text-align: center;">Weight</p> <p>1) 1 ton = 2,000 pounds</p> <p>2) 1 pound = 16 oz.</p>	<p style="text-align: center;">Capacity</p> <p>1) 1 pint = 4 cups</p> <p>2) 1 gallon = 4 quarts</p> <p>3) 1 quart = 2 pints</p> <p>4) 1 cup = 8 fl. oz.</p> <p>5) 1 gallon = 16 cups</p>
<p style="text-align: center;">Set A</p> <p>1) 60 inches = 5 feet</p> <p>2) 5 yards = 15 feet</p> <p>3) 8 cups = 16 pints</p> <p>4) 5 pounds = 80 oz.</p> <p>5) 6 feet = 72 inches</p> <p>6) 4 miles = 21,120 feet</p> <p>7) 4 tons = 8,000 pounds</p> <p>8) 3 quarts = 12 cups</p> <p>9) 4 pints = 8 cups</p> <p>10) 3 gallons = 12 qts.</p>	<p style="text-align: center;">Set B</p> <p>1) 64 ounces = 4 lbs.</p> <p>2) 7 miles = 36,960 ft</p> <p>3) 6000 lbs. = 3 tons</p> <p>4) 4 yds = 12 ft</p> <p>5) 7 ft = 84 in</p> <p>6) 8 cups = 2 quart</p> <p>7) 48 oz = 6 cups</p> <p>8) 7 quarts = 28 cups</p> <p>9) 31,680 ft = 6 miles</p> <p>10) 10 cups = 5 pts</p>

Metric Practice

Fill in each step with the appropriate unit.



This mnemonic device helps in remembering the units:

<p>A _____</p> <p>measures LENGTH.</p> 	<p>A _____</p> <p>measures WEIGHT.</p> 	<p>A _____</p> <p>measures LIQUID VOLUME.</p> 
--	--	---

Write the correct abbreviation for each metric unit.

- | | | |
|-------------------|---------------------|---------------------|
| 1) Kilogram _____ | 4) Milliliter _____ | 7) Kilometer _____ |
| 2) Meter _____ | 5) Millimeter _____ | 8) Centimeter _____ |
| 3) Gram _____ | 6) Liter _____ | 9) Milligram _____ |

Solve the following conversions.

- | | | |
|-----------------------|----------------------|-----------------------|
| 10) 2000 mg = _____ g | 15) 5 L = _____ mL | 20) 6 cm = _____ mm |
| 11) 104 km = _____ m | 16) 198 g = _____ kg | 21) 50 m = _____ km |
| 12) 480 cm = _____ m | 17) 75 mL = _____ L | 22) 65 g = _____ mg |
| 13) 5.6 kg = _____ g | 18) 50 cm = _____ m | 23) 6.3 cm = _____ mm |
| 14) 8 mm = _____ cm | 19) 5.6 m = _____ cm | 24) 120 mg = _____ g |